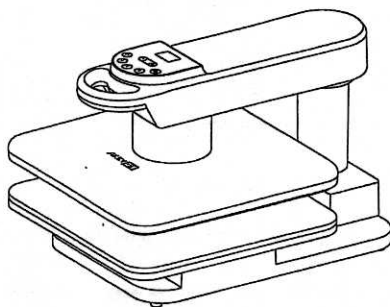




Auto Heat Press Machine

Model: AP8



Please read the instructions carefully before use!

If you need help regarding product issues, after-sales service, or other relevant problems, please contact us via email: support@akeydiy.net
Please provide the following information:
• OrderID
• Problem Description



MADE IN CHINA

AKEYDIY, established in 2020, is dedicated to fostering children's hands-on skills and inspiring them to explore, discover, and learn through active and imaginative play. The founder, George Akey, a father of two and an ardent DIY enthusiast, firmly believes in the immense creative potential within every child. He is convinced that given the right opportunities and tools, anyone can unlock their DIY potential.

George's inspiration for his inaugural product was sparked by children's aspirations to DIY their own Halloween costumes, hats, and even trick-or-treat bags. The kids had designed the perfect patterns, but he found himself without an adequate heat press machine to transform their creative designs into reality.

After months of hard work, he finally manufactured a durable and user-friendly machine. This machine, designed for adult use, became like a key, unlocking infinite creative potential for DIY enthusiasts. It allowed parents to safely help their children bring their costume ideas to life.

Over time, the AKEYDIY brand gradually grew and expanded. In addition to the heat press machine, they introduced various products such as bounce houses and water slides, all aimed at helping families create more joyful moments. AKEYDIY is committed to providing opportunities for individuals to actualize their creative ideas, allowing each person to find enjoyment and a sense of accomplishment in the DIY process.

A Key to Unlock Your DIY Potential!

If you need help regarding product issues, after-sales service, or other relevant problems, please contact us via email:

support@akeydiy.net

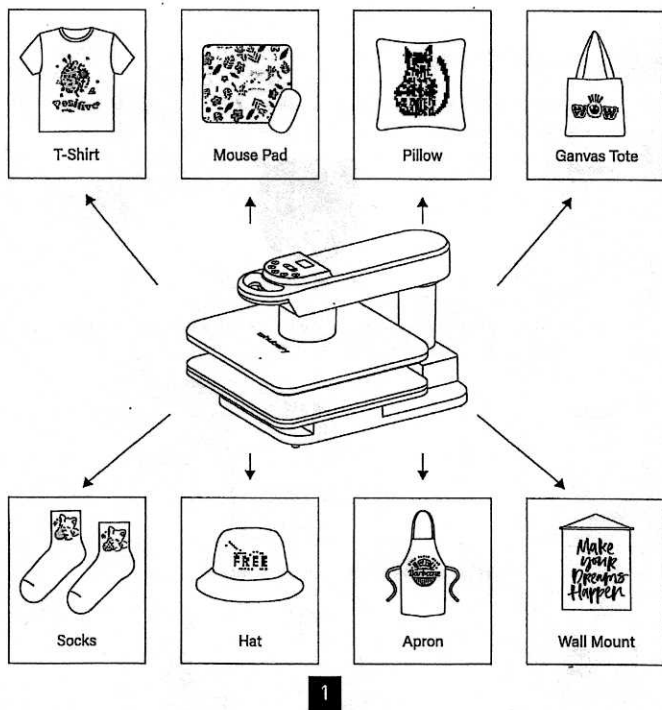
Please provide the following information:

- OrderID
- Problem Description

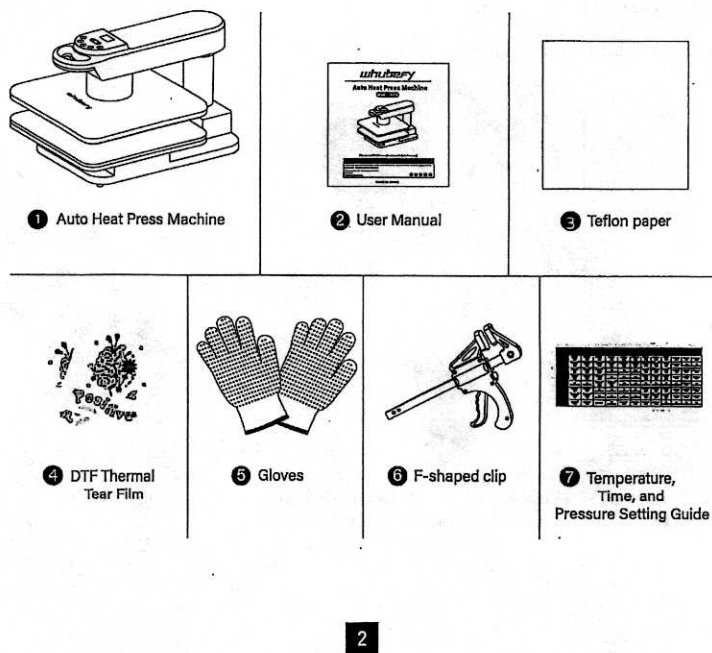


MADE IN CHINA

A great process or producing custom products



Package Included:



► Glance Features



Digital LCD Screen Control

Clear display, easy to set temp and time.
Time: 0-600s



Fahrenheit / Celsius Option

There are °F / °C options that can choose the one preferred.
Temp: 105°F-410°F/ 40°C-210°C



Ergonomic Handle

With efficiency and comfort design, the handle can help you better operate the machine smoothly.



Evenly Heated Plate

Highly durable aluminum alloy, provide flawless transfers.



Insulated Anti-slip Base

Not only a placement to settle the machine, but also the protection of your table from scorch.



Fireproof Design

Made of premium fire-resistant ABS & PA.

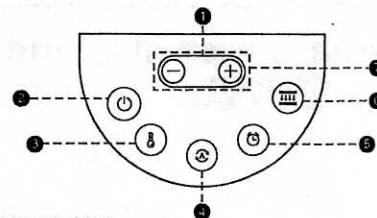


Auto Shut Off & Overheat Protection

The machine shuts off automatically after 10 mins without operation.
Overheat protection is pre-installed.

3

► Glance Features



1 Add/Subtract Control key

Increase/decrease temperature, time or pressure value.

2 Power ON/OFF key

Press the switch button to turn on and press again to turn off.

3 Temp key

Sets the temperature and allows you to switch between Celsius and Fahrenheit.

4 Auto Start key

Automatically Iron on a batch of similar products based on the user-defined memory modes.

5 Time key

Sets the pressing time.

6 Pressure selection key

Pressing different thickness materials, better ironing effects can be achieved by selecting different pressure by this key, the cycle choose adjustment value are:
20kg>25kg>30kg>35kg>40kg>45kg>50kg>20kg
(The Pressure also can be set by this key and +/- keys together quickly)

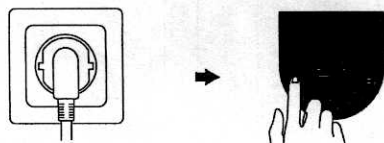
7 Plus and minus combination keys

Press and hold for three seconds to restore to factory settings

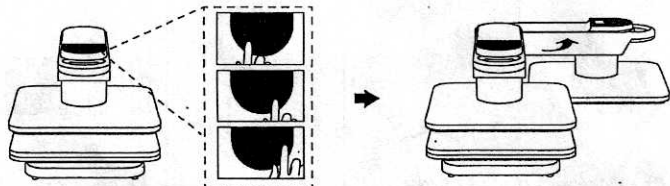
4

► Operation Guide

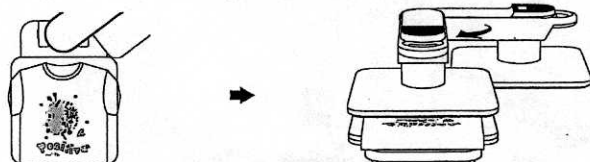
1. Plug in the power supply and press the power key.



2. Set the temperature, time, and pressure, and rotate the heating plate outward to the appropriate position.



3. Place the items and consumables to be transferred on the Ironing board, rotate the heating plate onto the ironing board, and wait for the temperature to reach the set value.

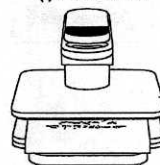


5

► Operation Guide

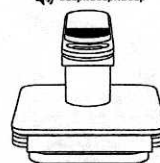
4. When you hear the buzzer sounding, It means heating is completed, press the automatic start key.

Beep..Beep..Beep



5. When the preset time is up, the buzzer sounds again, the heating plate is rotated outward to the appropriate position, and the transfer work is completed.

Beep..Beep..Beep



6. Peel off the transfer film and you will get a unique design that belongs to you.



6

NOTE

Please switch off the machine and unplug the power cord when the machine is not in use.
Please be careful the machine may still be hot, it needs a period of time to cool down after use.

1. Different goods will require different temperature and time settings because of different materials or thicknesses. Please use flat materials for transfer. Curved materials cannot be transferred.
2. Please keep children away when using the heat press machine.
3. Please do not use heat press machine for food processing.
4. Please store the heat press machine in a dry environment.

Troubleshooting

Q: Why does the temperature not reach the set value and I press the timer button, the machine begins to countdown, is there something wrong?

A: Please don't worry, it is normal, after the temp reach your desired value (not setting value), you can press the timer. Make sure that your temp reach the recommended settings.

Q: What are the tips for successful transfers with hobby press?

A: For perfect transfers that lasting, three things are important:

1. A stable and even surface, but iron boards and plastic tables can not provide a stable and even surface required for successful transfers, so we suggest you use an extra silicone mat (not included).
2. Use the recommended settings for the iron-on and base material you're using.
3. Make sure you apply firm pressure when transfer.

Q: How hard needed to press?

A: Some applications call for "gentle" pressure, and some call for "firm" pressure. "Firm" pressure means press down with two hands and 15-40 lbs of body weight. "Gentle" pressure means one hand with 5-15 lbs of body weight. In all cases, a waist-high table is recommended when applying the recommended pressure.

7

Troubleshooting

Q: When pressed onto the garments, the color of the design is faded?

A: There may be 3 situations, the first is that the pressure is too low, the second is that the temperature is not hot enough, and the third is that the design has not been suppressed for enough time. You may need to try more to get the correct temperature, time, and pressure.

Q: I followed the instructions and my iron-on didn't stick. What happened? How do I get it to work?

A: The most common reasons for your images not sticking:

1. Press machine did not make full contact with the base material. This could be because of seams, zippers, or anything else that will cause an uneven surface.
2. Verify that your press machine is set to the recommended settings.
3. Be sure heat has been applied to both the front and the back of the design for recommended time.
4. Re-touch the front and back of material with heat for an additional 10-15 seconds.

Q: The press machine temperature goes down when I apply it to the image. Is there something wrong?

A: Press temperature may fluctuate briefly when placed on the base material after heating. This is due to the difference in temperature of the heated plate and the base material. Don't worry, the machine temperature will quickly return to the selected setting. Your image adhesion will not be affected.

Q: My machine keeps turning off, and I have to turn it back on. Why?

A: This is the auto shut off safety feature of heat press machine. After 10 minutes of inactivity, or no button pressed, the device will alert you and then shut off.

8

Troubleshooting

Problems	Typical Solutions
Burnt or blurry images	Reduce the time and/or temperature being used.
Faded, colourless images	Increase the time and/or temperature being used.
Failure to heat up despite a normal display on the screen	Check the relay between the control box and the platen. Repair or replace the platen.
Failure to heat up and no display when turned on	Check the cord between the power and the control box. Change the machine's fuse if it has blown.
The actual temperature of the platen is higher than the control box's set temperature	Repair or replace the relay between the control box and the platen.

Guarantee/Safety

GUARANTEE

The products are strictly based on the Consumer Protection Law of the People's Republic of China and Product's Quality Law of the People's Republic of China.

The services are as follows:

Within 12 months this product has the performance failure listed in the Product Performance Failure Table. It is confirmed by manufacturer and can be used for maintenance service free of charge. If out of validity, damage caused by force majeure, or human causes, the machine is not covered by the warranty, repair in charge.

SAFETY INSTRUCTION

Before operating this unit, please read these instructions completely and save them.

Notice:

1. Keep unplug when moving the machine.
2. Keep unplug when installing accessories.
3. Place on a flat and stable platform and operate under ventilated conditions.
4. When operating the machine, please wear the included high-temperature resistant gloves.

9

WARNING

Improper use may result in electric shock, fire, personal injury and other damage.

1. Do not use this machine in a hazardous location.
2. Do not use when the machine is not working properly.
3. Do not allow children or adults who do not understand this manual to operate this machine.
4. Do not disassemble and repair this machine.
5. Do not use an unsuitable AC outlet.

Basic Parameters

Product name:	Auto Heat Press	Model:	AP8
Heating plate size	381mm x 381mm/15 x 15inch	Rated voltage/ frequency	AC120V/60Hz 1250W MAX
Heating method	Heating method	Temperature range:	40°C-210°C(105°F-410°F) Time range: 0-600s
Gross weight:	20KG	Outer box size:	L626 x W462 x H397mm

Warranty

Type	Items	Period
Whole machine	Parts of machine(excl. accessories)	1 year
Accessories	List the accessories	Not covered

10

► Guide to Temperature, Time, and Pressure Settings for Different Materials

HTV type	100% Cotton	Cotton/ Poly Blend	Polyester*	Nylon Blend or Silk	Silk*	Mesh	Cotton Canvas	Felt	Faux Leather	Cardstock	Corkboard	Chipboard
Basic PU	350°F/175°C 30 sec W/G	350°F/175°C 30 sec W/G	350°F/175°C 30 sec W/G	305°F/150°C 30 sec W/G	305°F/150°C 30 sec W/G	305°F/150°C 30 sec W/G	355°F/180°C 30 sec W/G	305°F/150°C 30 sec W/G	305°F/150°C 30 sec W/G	305°F/150°C 30 sec	330°F/165°C 15 sec	330°F/165°C 30 sec
Foil	330°F/165°C 30 sec C/G	330°F/165°C 30 sec C/G	330°F/165°C 30 sec C/G	305°F/150°C 30 sec C/G	305°F/150°C 30 sec C/G	320°F/160°C 30 sec C/G	320°F/160°C 30 sec C/G	320°F/160°C 30 sec C/G	275°F/135°C 30 sec C/G	285°F/140°C 30 sec	Not recommended	Not recommended
Glitter	355°F/180°C 30 sec W/G	355°F/180°C 30 sec W/G	355°F/180°C 30 sec W/G	Not recommended	Not recommended	Not recommended	305°F/150°C 30 sec W/G	305°F/150°C 30 sec W/G	305°F/150°C 30 sec W/G	315°F/155°C 30 sec	330°F/165°C 15 sec	330°F/165°C 30 sec
Holographic	350°F/175°C 30 sec W/G	350°F/175°C 30 sec W/G	350°F/175°C 30 sec W/G	Not recommended	Not recommended	Not recommended	315°F/155°C 30 sec W/G	315°F/155°C 30 sec W/G	315°F/155°C 30 sec W/G	315°F/155°C 30 sec	330°F/165°C 15 sec	330°F/165°C 30 sec
Stretchable (e.g. Sportflex)	Not recommended	Not recommended	330°F/165°C 30 sec W/G	330°F/165°C 30 sec W/G	Not recommended	Not recommended	Not recommended	Not recommended	Not recommended	Not recommended	330°F/165°C 15 sec	Not recommended
Patterned	355°F/180°C 50 sec C/F	355°F/180°C 50 sec C/F	Not recommended	Not recommended	Not recommended	Not recommended	355°F/180°C 50 sec C/F	285°F/140°C 20 sec C/F	285°F/140°C 20 sec C/F	315°F/155°C 30 sec	330°F/165°C 15 sec	330°F/165°C 30 sec
Ready-to Apply Designs	355°F/180°C 50 sec C/F	355°F/180°C 50 sec C/F	Not recommended	Not recommended	Not recommended	Not recommended	355°F/180°C 50 sec C/F	285°F/140°C 20 sec C/F	285°F/140°C 20 sec C/F	315°F/155°C 30 sec	330°F/165°C 15 sec	330°F/165°C 30 sec
Fusible Fabric	330°F/165°C 30 sec	330°F/165°C 30 sec	330°F/165°C	Not recommended	320°F/160°C 30 sec	330°F/165°C 30 sec	350°F/175°C 30 sec	320°F/160°C 30 sec	Not recommended	Not recommended	Not recommended	Not recommended

W/G: Warm Peel / Gentle Press

C/G: Cool Peel / Gentle Press

C/F: Cool Peel / Firm Press